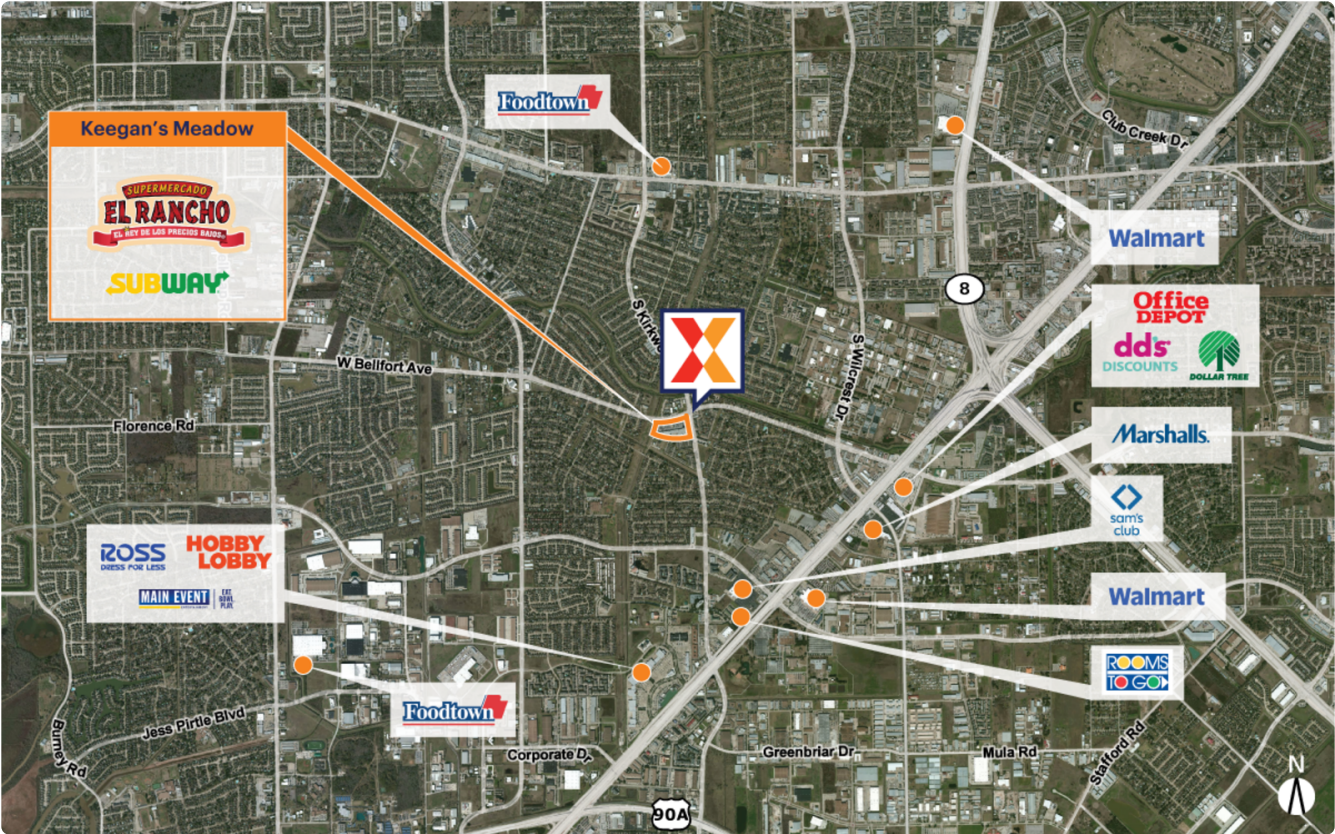


Keegan's Meadow

Harris County Houston-Pasadena-The Woodlands, TX 125,100 Sq Ft

11753 West Bellfort | Stafford, TX 77477

29.6567, -95.5848



Demographics	1 Mile	3 Miles	5 Miles
Population	24,304	155,954	429,964
Daytime Pop.	19,364	174,396	450,417
Households	8,381	52,944	148,900
Income	\$89,825	\$84,508	\$90,732

Source: Synergos Technologies, Inc. 2024

High visibility from 33K+ vehicles daily on West Bellfort St and 18K+ vehicles daily on S Kirkwood Rd (Kalibrate 2019)

Strong daytime population of 166K+ within a 3-mile radius

Surrounded by a dense population of 155K+ residents within 3 miles

El Rancho-anchored center with top national brands including Meineke, Bank of America, Metro by T-Mobile and Subway.

Convenient access to Sam Houston Tollway and I-69



Keegan's Meadow

11753 West Bellfort | Stafford, TX 77477

Harris County Houston-Pasadena-The Woodlands, TX 125,100 Sq Ft

29.6567, -95.5848



Available Spaces

14 1,200 Sq Ft 360° 22 1,206 Sq Ft 360°

Current Tenants

Space size listed in square feet

01	El Rancho Supermercado	53,250
03	Subway	1,237
04	Metro by T-Mobile	1,125
05	United Insurance and Services	1,125
06	ACE Cash Express	1,237
07	Avalon Liquor's	2,800
08	Keegan's Family Clinic	2,400
09	Boost Mobile	1,200
10	Lelan's Nails	1,200
11	LN Beauty Express Hair Design	1,200
12	Tonike Postal & Tax Services	1,200
13	Speed Queen	4,000
15	Bank of America	3,500
16	I Heart Boba	1,600
17	King Dollar	10,355
18	Retro Fitness	15,006
19	Total Wireless	2,600
20	Protect Insurance	600
21	Rodeo Dental	6,500
23	Sicily Pizza & Pasta	1,050
24	Meineke Car Care Centers/Econo Lube	5,609
25	Pronto Muffler Shop	1,800
26	Parkglen Animal Clinic	2,100

This site plan is for illustrative and information purposes only, showing the general layout of the shopping center; and is not a legal survey. Brixmor makes no representation or warranty that the shopping center is exactly as depicted as site conditions and tenant mix are subject to change over time.

5201

